



The countryside charity
Kent

CPRE Kent: 93 years of Protecting our Countryside

Hilary Newport, Director of CPRE Kent

Presentation to CARE

November 16th 2022





Better Planning Coalition



Wildlife and
Countryside

LINK 

[HOME](#)

[ABOUT](#)

[MEMBERSHIP](#)

[OUR WORK](#)

[CAMPAIGNS](#)

[NEWS](#)

[CONTACT US](#)

[Q&A](#)



“Destroying nature destroys the fundamentals of health and happiness” – letter from nature campaigners warns Prime Minister of the impact of ripping up environmental protections



Draft Canterbury District

LOCAL PLAN to 2045

National Planning Policy

- Good planning allows the development and use of land to balance economic, social and environmental benefits and drawbacks
- Local authorities are required to have an up-to-date plan
- Local authorities have a duty to cooperate
- Local authorities have a duty to consult on the plans

National Planning Policy

- There is a standard method for assessing housing need:
 - Assess projected household growth using 2014-based household forecasts
 - Adjust this figure upwards in areas where house prices are higher relative to local earnings
 - Cap this increase, depending on the status of its existing plans.
- This is the starting point

CCC Housing Numbers

- The standard method for assessing housing need:
 - Assess projected household growth using 2014-based household forecasts
 - This amounts to **806** units per annum.
 - Adjust this figure upwards in areas where house prices are higher relative to local earnings
 - This amounts to **1168** units per annum
 - Cap this increase, depending on the status of its existing plans.
 - The cap reduces this to **1120** per annum
 - CCC is proposing to allocate **1263** units per annum
 - (Average build over the last 20 years has been **572** per annum)

Canterbury Local Plan 2045

- Planning law (in theory) requires all decisions to be made in line with the adopted local plan.
- This is your best opportunity of influencing the plan

It's flexible

You are
responding to
your Council

They need your
opinion

They need to
demonstrate they
have listened

Making your representation effective

Don't rush

Focus on your
key areas of
concern

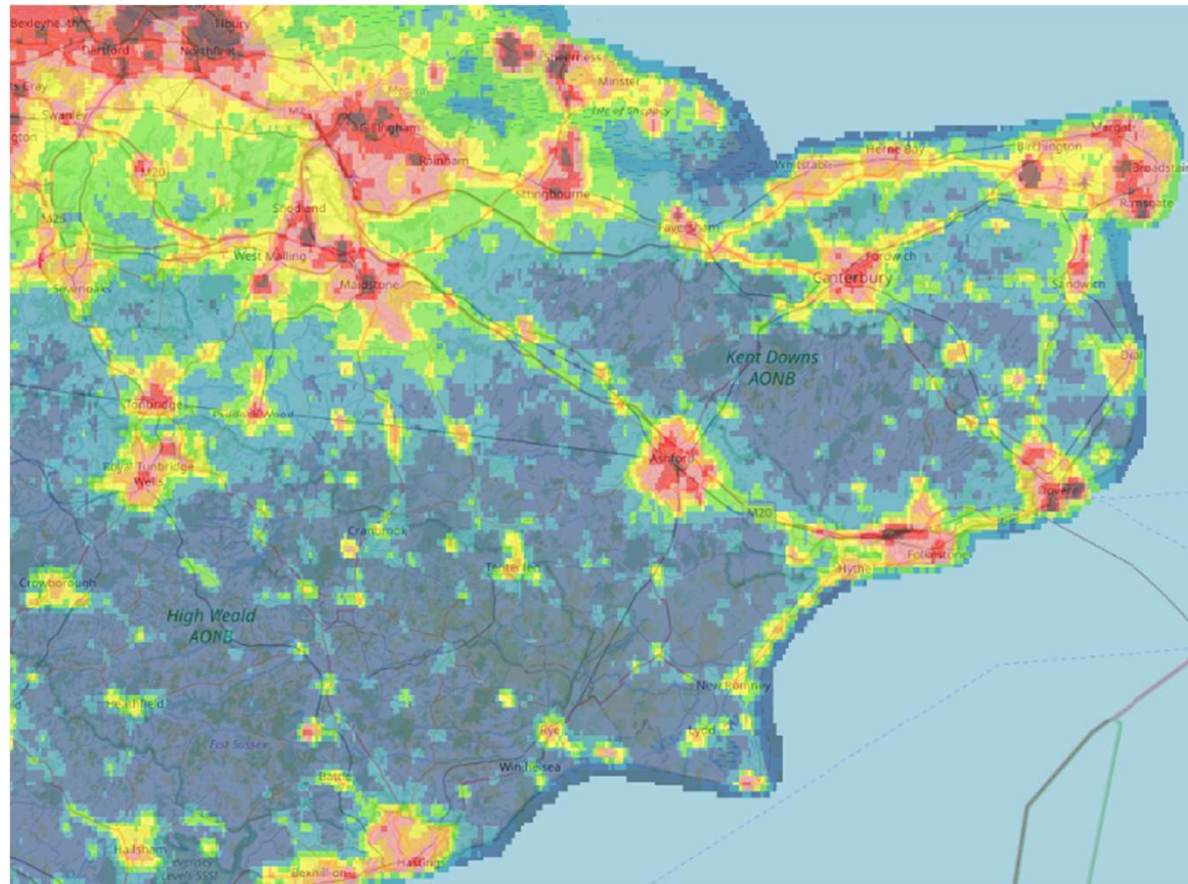
Use your local
knowledge

Think about
improvements

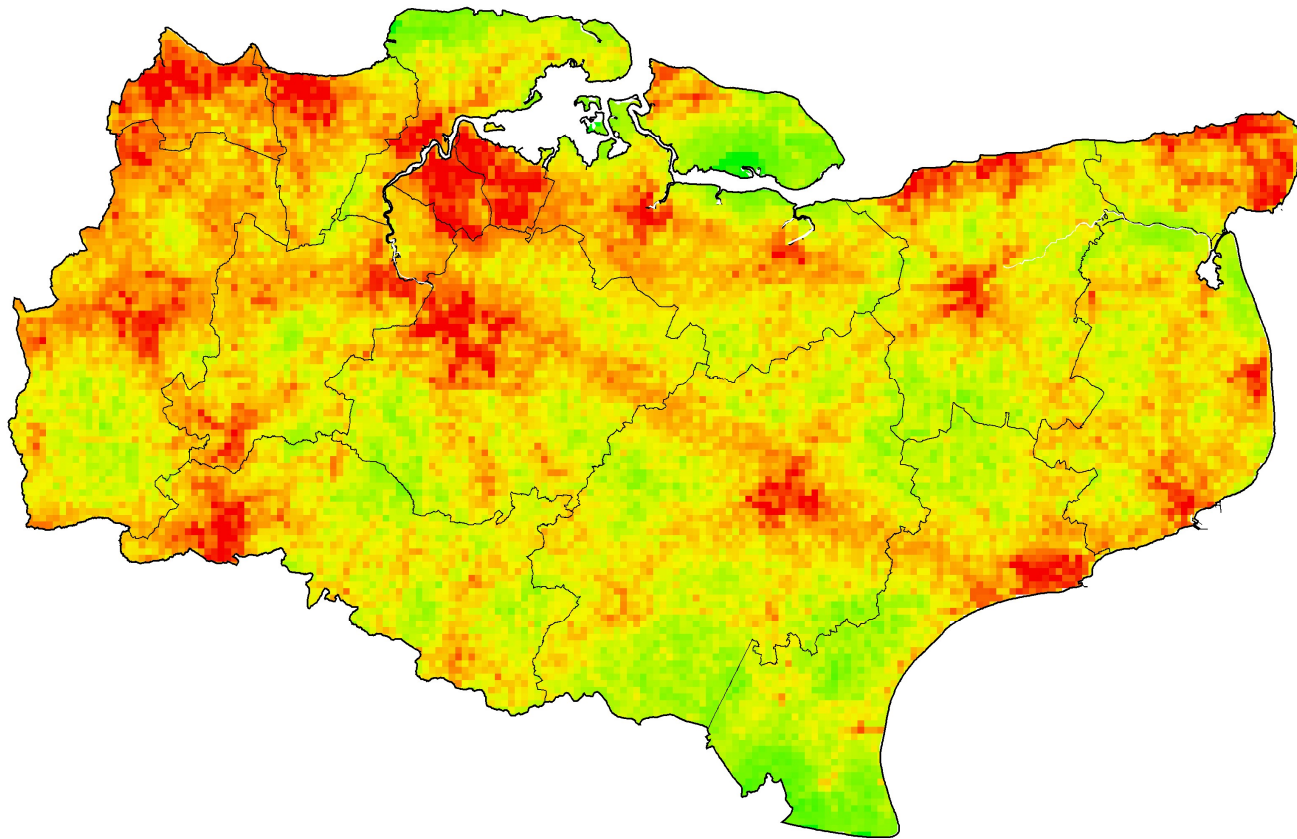
Make your
voice heard!

Cite evidence

Mapping Dark Skies



Mapping Tranquillity





KENT & MEDWAY BIOLOGICAL RECORDS CENTRE

Kent's Local Environmental Records Centre

VAT Number: 907 3184 29 Charity Number: 1110163



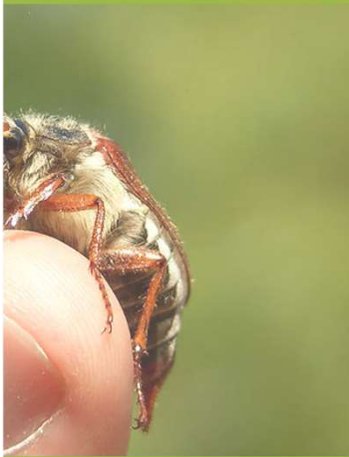
01795 532385

[Home](#) [Blog](#) [Data Search Service](#) [Conservation](#) [Recording and Support](#) [Education and Research](#)

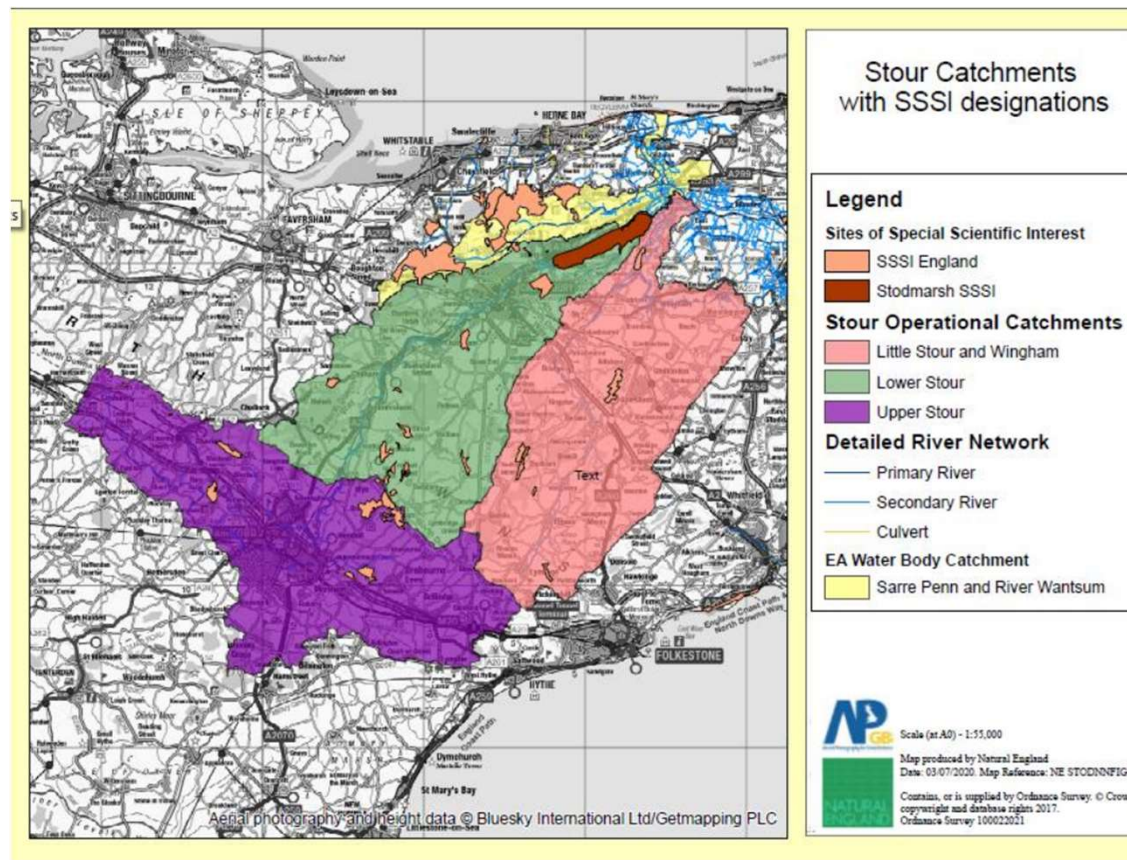
info@kmbrc.org.uk

KENT & MEDWAY BIOLOGICAL RECORDS CENTRE

Collecting, collating and disseminating wildlife information for the County of Kent.



Nutrient neutrality...



Below you'll find answers to our most frequently asked questions.

Could you explain the Local Plan process and what happens from initial consultation through to adoption?

A Local Plan is a vitally important document that sets out where and what new development is to be allowed within a council's area over the next 15 to 20 years.

Once a Local Plan is approved, the law requires that all planning decisions be made in line with that Plan except in very special circumstances (known as material considerations). This may even be where a council subsequently changes its mind after a Local Plan is approved!

Unfortunately, the first time many people hear about a proposed development is when there is a planning application for that development, not when it is firstly being considered as a potential development within a Local Plan. By this point, it is often too late to object against the principle of the development.

For this reason, we strongly encourage those who care about Kent's countryside to engage with the Local Plan process. This is also why we campaign at national level for much better community involvement throughout this process.

We however recognise commenting on a Local Plan can be very complicated and can take up a lot of time. That is why we at CPRE Kent will always prioritise robustly responding to Local Plans in the county on behalf of our members and supporters. Above all, we will be seeking to ensure Local Plans protect the countryside and result in well-designed, locally-led planning proposals in sustainable locations.

To find out more about the Local Plan process, we have produced a flow chart setting out the various stages involved. [See flow chart \(PDF 54 KB\)](#).

Our future

- Like most charities, CPRE locally and nationally is suffering losses of funding, exacerbated by Covid
- We rely wholly on our members, supporters and benefactors for funding
- Please consider supporting us, joining as a member, or joining as a volunteer
- Visit cprekent.org.uk and click on 'support us'
- Thank you!