



the **play inspection** company
the safest hands around playgrounds

Annual Inspection

Adisham Parish Council

Adisham Recreation Ground

The Street, Adisham, Canterbury, Kent, CT3 3JL



Unit 5 Glenmore Business Park, Blackhill Road, Poole, Dorset, BH16 6NL

t - 01202 590675 f - 0870 428 3942 e - info@playinspections.co.uk

www.playinspections.co.uk

Powered by:

the play ▶
inspection app

by the play inspection company

Risk Assessment Matrix

Probability>>	5	Very High	VL	L	M	H	VH
	4	High	VL	L	M	H	H
	3	Moderate	VL	L	L	M	M
	2	Low	VL	L	L	L	L
	1	Very Low	VL	VL	VL	VL	VL
		Very Low	Low	Moderate	High	Very High	
		1	2	3	4	5	

Severity>>

Probability Score	Probability of Occurrence
1 – Very Low	No significant probability; lightning Strike
2 – Low	Minimal probability of occurrence. Requires significant factor or combination of factors to take place. Significant increase in intensity of use.
3 – Moderate	Moderate probability. An added factor is needed to cause an accident. Designed use is unlikely to be problematic, additional factor is required. Covers or guards loose, removed or vandalised. Absent guard rail or barrier at high levels
4 – High	High probability. Accident is probable without any added factor. Glass contaminant in loose fill surface. Exposed sharp edges on equipment.
5 – Very High	Very High probability. If the situation is not addressed an accident is almost certain. Severely worn chains/shackles. Severely damaged surfacing within impact area

Severity Score	Severity of injury
1 – Very Low	No injury likely e.g. damaged or soiled clothing, minor bruising
2 – Low	Minor injury – Laceration or bruising requiring first aid only
3 – Moderate	Injury requiring medical intervention e.g. laceration requiring stitches, sprain, fracture of small bones of hand or foot.
4 – High	Serious injury including hospitalisation for observation e.g. concussion, fracture of long bones of leg/arm, back/neck injuries, fractured skull.
5 – Very High	Severe injury involving the potential for permanent disability e.g. amputation, loss of sight, spinal injury, fatality.

NB: When we inspect we only see a snapshot of the current condition of the equipment. It is the operator's responsibility to ensure that there is a continuing level of maintenance to keep the equipment in good working order and the site fit for use.

BS EN 1176:2008 Parts 1-11 (Playground equipment and surfacing)
 BS EN 14974 (Facilities for users of roller sports equipment)
 BS EN 15312 (Free access multi-sports equipment)
 BS 10075 (Specification for Parkour Equipment)

Site Information

Inspection Ref: 487965

Site Ref: 38249

Customer Order No: None

Annual Inspection - 16 October 2017 at 10:00 Inspector: Robert Baldock (RPII Annual Inspector)

Risk Assessment: **12 - Moderate Risk**



Location: The site is located in an area of public open space and is not directly overlooked by any properties in the local community.

Disabled Access: Some accessible features; an area that presents difficulties to the majority of people with disabilities but in favourable circumstances and certainly in partnership can be accessed.



8 - Low Risk

Item: Ancillary Items - Gate
Manufacturer: Not Identified
Surface Type: Grass
Equipment Compliance: N/A
Surface Area Compliance: N/A
Ref/Part Number:
Total Findings: 3



Finding 1

The gate is not operating correctly - Take effective action to ensure the gate closes between 4 and 8 seconds

Finding 2

The area under the gate has eroded leaving uneven areas, or the concrete foundations exposed, resulting in trip hazards at the entrance/exit to the playground - Reinstate to level with surrounding surfaces

Finding 3

The opening between the gate and the post is less than 12mm and could trap users fingers - Adjust gate to ensure a 12mm opening all around



6 - Low Risk

Item: Ancillary Items - Fence - Bow Top
Manufacturer: Not Identified
Surface Type: Grass
Equipment Compliance: N/A
Surface Area Compliance: N/A
Ref/Part Number:
Total Findings: 1



Finding 1

There are a number of fixings missing from the fence - Replace missing fixings



4 - Very Low Risk

Item: Ancillary Items - Sign
Manufacturer: Not Identified
Surface Type: N/A
Equipment Compliance: N/A
Surface Area Compliance: N/A
Ref/Part Number:
Total Findings: 1



Finding 1

This item is satisfactory - no work required



8 - Low Risk

Item: Swings - 1 Bay 1 Seat (Cradle) - Type 1
Manufacturer: Not Identified
Surface Type: Wet Pour
Equipment Compliance: No
Surface Area Compliance: Yes
Ref/Part Number:
Total Findings: 10



Finding 1

The surfacing around the item is damaged - Repair the damaged areas of surfacing

Finding 2

The surface has eroded and the foundations are exposed - Reinststate surrounding surfaces to cover the foundations

Finding 3

The chain openings are in excess of the 8.6mm as recommended by BS EN 1176 - Monitor use

Finding 4

The chain links are worn in excess of 40% and require renewing - Replace worn chains

Finding 5

The bushes are worn or missing - Replace worn or missing bushes

Finding 6

The paintwork on this item has been damaged or worn exposing the metal underneath which is rusting - Treat any rusting components and repaint

Finding 7

The seats are too close to the frame as defined in BS EN 1176 Part 2; this is a low risk failure and no remedial action is required - Monitor use

Finding 8

The seats are too close to each other as defined in BS EN 1176 Part 2; this is a low risk failure and no remedial action is required - Monitor use

Finding 9

The seat has minor damage or wear - Monitor for any further deterioration and replace as required

Finding 10

There are weeds/vegetation growth between or around the edges of the surfacing - Remove weeds/vegetation growth

Findings continued for Swings - 1 Bay 1 Seat (Cradle) - Type 1



12 - Moderate Risk

Item: Activity Equipment - Multi Play (Junior)
Manufacturer: Not Identified
Surface Type: Wet Pour
Equipment Compliance: No
Surface Area Compliance: Yes
Ref/Part Number:
Total Findings: 13



Finding 1

There are a number of dents in the slide surface - Monitor for any further deterioration and repair as required

Finding 2

The side of the slide is damaged - Monitor for any further deterioration and repair as required

Finding 3

This item has no slide bar fitted as required by BS EN 1176 Part 3 - Monitor use

Finding 4

The item fails to meet the requirements of BS EN 1176:2008 Part 1 4.2.7.2 head and neck entrapment in the barriers and/or steps - Monitor use

Finding 5

There is/are several inserts missing - Replace missing inserts

Finding 6

There is some graffiti present - Remove the graffiti

Finding 7

There is/are finger entrapment/s in the frame and the item fails to meet the requirements of BS EN 1176:2008 Part 1 4.2.7.6 Entrapment of fingers - Monitor use

Finding 8

The platforms have severely rotted - Replace all affected timber

Finding 9

There are weeds/vegetation growth between or around the edges of the surfacing - Remove weeds/vegetation growth

Finding 10

There is algae or moss growth on the surface resulting in slippery conditions - Clean and treat appropriately

Findings continued for Activity Equipment - Multi Play (Junior)

Finding 11

The paintwork on this item has been damaged or worn exposing the metal underneath which is rusting - Treat any rusting components and repaint

Finding 12

Parts of the steel on this item have corroded excessively and the metal has perforated in places - Ensure all affected areas are treated and repaired

Finding 13

The unit is easily accessible and has an opening in the barrier to steep play elements in excess of 500mm - Monitor use



8 - Low Risk

Item: Ancillary Items - Bench
Manufacturer: Not Identified
Surface Type: Grass
Equipment Compliance: N/A
Surface Area Compliance: N/A
Ref/Part Number:
Total Findings: 3



Finding 1

The bench is damaged - Repair or replace as required

Finding 2

The surface has eroded and the foundations are exposed - Reinststate surrounding surfaces to cover the foundations

Finding 3

There is algae or moss on the surface of the equipment - Clean and treat appropriately



6 - Low Risk

Item: Ancillary Items - Shelter
Manufacturer: Monster Play Systems
Surface Type: Concrete
Equipment Compliance: N/A
Surface Area Compliance: N/A
Ref/Part Number:
Total Findings: 3



Finding 1

There is some graffiti present - Remove the graffiti

Finding 2

There is or are fixings missing on the item - Replace all missing fixings

Finding 3

There is/are bolt cap covers missing or damaged on the item - Replace missing or damaged bolt cap covers



8 - Low Risk

Item: Multi Use Games Area - Multi Use Games Area (MUGA)
Manufacturer: Not Identified
Surface Type: Bitmac
Equipment Compliance: No
Surface Area Compliance: N/A
Ref/Part Number:
Total Findings: 8



Finding 1

A clearly visible sign should be provided in a prominent position with the wording as detailed BS EN 15312- the equipment is not intended for children less than 3 years old- the warning Do not climb on the framework or nets- the warning Do not hang on the ring (if provided)- the warning Do not wear rings or other jewellery- name and telephone number of the administrator- number to call in case of accident - Provide signage to BS EN 15312

Finding 2

There are trip hazards present at the gate entrance - Reinstate surrounding surfaces to level to remove the trip points

Finding 3

There are weeds/vegetation growth between or around the edges of the surfacing - Remove weeds/vegetation growth

Finding 4

There is/are finger entrapments in the panels and the item fails to meet the requirements of BS EN 15312 Clause 4.4.2.2 Entrapment of fingers - Monitor use

Finding 5

There is algae or moss growth on the surface resulting in slippery conditions - Clean and treat appropriately

Finding 6

There is some tree debris on the surfacing - Remove and maintain

Finding 7

The tree canopy overhangs the equipment and is less than 2.0m away - Lift tree canopy to ensure a minimum clearance of 2.0m from the equipment

Finding 8

There are a number of missing panels - Replace



8 - Low Risk

Item: Other - Cable Runway
Manufacturer: Playdale Playgrounds Ltd
Surface Type: Grass Matrix Tiles
Equipment Compliance: No
Surface Area Compliance: Yes
Ref/Part Number:
Total Findings: 3



Finding 1

The height of the seat is less than 400mm when partially loaded - Ensure the seat is a minimum of 400mm above ground level when loaded with 130kg

Finding 2

We recommend that the main cable is thoroughly inspected at least once every 2 years this; will involve either removing the cable or gaining access by ladders and/or steps to inspect for damage or internal rusting, this will help to ensure the continued safe use of the equipment - Inspect cable every 24 months

Finding 3

There is some graffiti present - Remove the graffiti



4 - Very Low Risk

Item: Ancillary Items - Picnic Table
Manufacturer: Playdale Playgrounds Ltd
Surface Type: Grass
Equipment Compliance: N/A
Surface Area Compliance: N/A
Ref/Part Number:
Total Findings: 1



Finding 1

This item is satisfactory - no work required

Findings Information



4 - Very Low Risk (Finding 1)

Item: Ancillary Items - Gate
Manufacturer: Not Identified

Risk Level: V - Very Low Risk
Surface: Grass



Finding: The gate is not operating correctly

Action: Take effective action to ensure the gate closes between 4 and 8 seconds



8 - Low Risk (Finding 2)

Item: Ancillary Items - Gate
Manufacturer: Not Identified

Risk Level: L - Low Risk
Surface: Grass



Finding: The area under the gate has eroded leaving uneven areas, or the concrete foundations exposed, resulting in trip hazards at the entrance/exit to the playground

Action: Reinstate to level with surrounding surfaces



8 - Low Risk (Finding 3)

Item: Ancillary Items - Gate
Manufacturer: Not Identified

Risk Level: L - Low Risk
Surface: Grass



Finding: The opening between the gate and the post is less than 12mm and could trap users fingers
Action: Adjust gate to ensure a 12mm opening all around



6 - Low Risk (Finding 1)

Item: Ancillary Items - Fence - Bow Top
Manufacturer: Not Identified

Risk Level: L - Low Risk
Surface: Grass



Finding: There are a number of fixings missing from the fence
Action: Replace missing fixings



8 - Low Risk (Finding 1)

Item: Swings - 1 Bay 1 Seat (Cradle) - Type 1 **Risk Level:** L - Low Risk

Manufacturer: Not Identified **Surface:** Wet Pour



Finding: The surfacing around the item is damaged **Action:** Repair the damaged areas of surfacing



8 - Low Risk (Finding 2)

Item: Swings - 1 Bay 1 Seat (Cradle) - Type 1 **Risk Level:** L - Low Risk

Manufacturer: Not Identified **Surface:** Wet Pour



Finding: The surface has eroded and the foundations are exposed **Action:** Reinstate surrounding surfaces to cover the foundations



5 - Very Low Risk (Finding 3)

Item: Swings - 1 Bay 1 Seat (Cradle) - Type 1
Risk Level: V - Very Low Risk
Manufacturer: Not Identified
Surface: Wet Pour

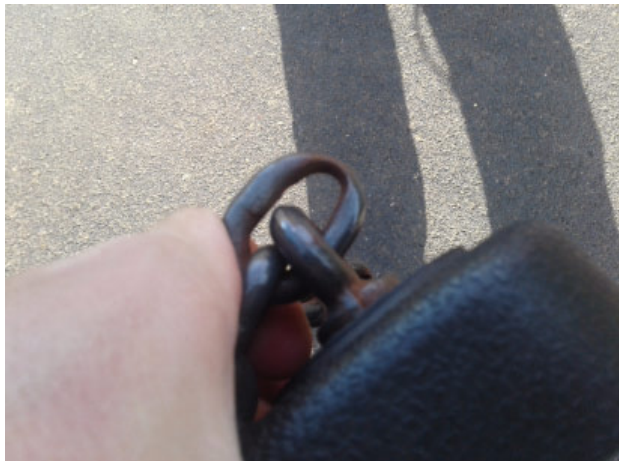


Finding: The chain openings are in excess of the 8.6mm as recommended by BS EN 1176
Action: Monitor use



8 - Low Risk (Finding 4)

Item: Swings - 1 Bay 1 Seat (Cradle) - Type 1
Risk Level: L - Low Risk
Manufacturer: Not Identified
Surface: Wet Pour



Finding: The chain links are worn in excess of 40% and require renewing
Action: Replace worn chains



8 - Low Risk (Finding 5)

Item: Swings - 1 Bay 1 Seat (Cradle) - Type 1 **Risk Level:** L - Low Risk

Manufacturer: Not Identified **Surface:** Wet Pour



Finding: The bushes are worn or missing

Action: Replace worn or missing bushes



6 - Low Risk (Finding 6)

Item: Swings - 1 Bay 1 Seat (Cradle) - Type 1 **Risk Level:** L - Low Risk

Manufacturer: Not Identified **Surface:** Wet Pour



Finding: The paintwork on this item has been damaged or worn exposing the metal underneath which is rusting

Action: Treat any rusting components and repaint



4 - Very Low Risk (Finding 7)

Item: Swings - 1 Bay 1 Seat (Cradle) - Type 1 **Risk Level:** V - Very Low Risk

Manufacturer: Not Identified **Surface:** Wet Pour



Finding: The seats are too close to the frame as defined in BS EN 1176 Part 2; this is a low risk failure and no remedial action is required

Action: Monitor use



4 - Very Low Risk (Finding 8)

Item: Swings - 1 Bay 1 Seat (Cradle) - Type 1 **Risk Level:** V - Very Low Risk

Manufacturer: Not Identified **Surface:** Wet Pour



Finding: The seats are too close to each other as defined in BS EN 1176 Part 2; this is a low risk failure and no remedial action is required

Action: Monitor use



6 - Low Risk (Finding 9)

Item: Swings - 1 Bay 1 Seat (Cradle) - Type 1
Risk Level: L - Low Risk
Manufacturer: Not Identified
Surface: Wet Pour



Finding: The seat has minor damage or wear
Action: Monitor for any further deterioration and replace as required



6 - Low Risk (Finding 10)

Item: Swings - 1 Bay 1 Seat (Cradle) - Type 1
Risk Level: L - Low Risk
Manufacturer: Not Identified
Surface: Wet Pour



Finding: There are weeds/vegetation growth between or around the edges of the surfacing
Action: Remove weeds/vegetation growth



6 - Low Risk (Finding 1)

Item: Activity Equipment - Multi Play (Junior) **Risk Level:** L - Low Risk
Manufacturer: Not Identified **Surface:** Wet Pour



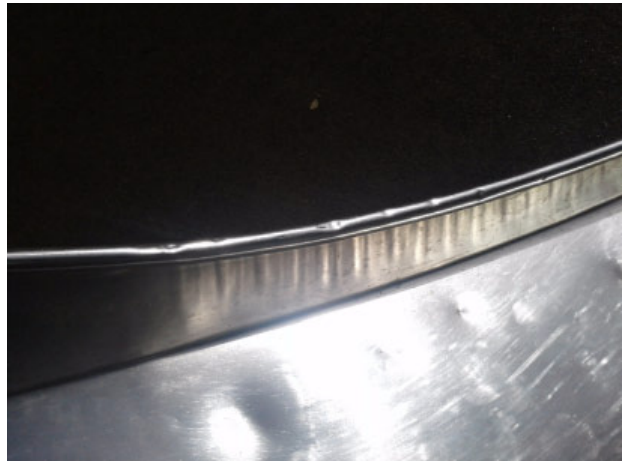
Finding: There are a number of dents in the slide surface

Action: Monitor for any further deterioration and repair as required



6 - Low Risk (Finding 2)

Item: Activity Equipment - Multi Play (Junior) **Risk Level:** L - Low Risk
Manufacturer: Not Identified **Surface:** Wet Pour



Finding: The side of the slide is damaged

Action: Monitor for any further deterioration and repair as required



8 - Low Risk (Finding 3)

Item: Activity Equipment - Multi Play (Junior) **Risk Level:** L - Low Risk
Manufacturer: Not Identified **Surface:** Wet Pour



Finding: This item has no slide bar fitted as required by BS EN 1176 Part 3 **Action:** Monitor use



5 - Very Low Risk (Finding 4)

Item: Activity Equipment - Multi Play (Junior) **Risk Level:** V - Very Low Risk
Manufacturer: Not Identified **Surface:** Wet Pour



Finding: The item fails to meet the requirements of BS EN 1176:2008 Part 1 4.2.7.2 head and neck entrapment in the barriers and/or steps **Action:** Monitor use



6 - Low Risk (Finding 5)

Item: Activity Equipment - Multi Play (Junior) **Risk Level:** L - Low Risk
Manufacturer: Not Identified **Surface:** Wet Pour



Finding: There is/are several inserts missing

Action: Replace missing inserts



2 - Very Low Risk (Finding 6)

Item: Activity Equipment - Multi Play (Junior) **Risk Level:** V - Very Low Risk
Manufacturer: Not Identified **Surface:** Wet Pour



Finding: There is some graffiti present

Action: Remove the graffiti



5 - Very Low Risk (Finding 7)

Item: Activity Equipment - Multi Play (Junior)

Risk Level: V - Very Low Risk

Manufacturer: Not Identified

Surface: Wet Pour



Finding: There is/are finger entrapment/s in the frame and the item fails to meet the requirements of BS EN 1176:2008 Part 1 4.2.7.6 Entrapment of fingers

Action: Monitor use



12 - Moderate Risk (Finding 8)

Item: Activity Equipment - Multi Play (Junior) **Risk Level:** M - Moderate Risk
Manufacturer: Not Identified **Surface:** Wet Pour



Finding: The platforms have severely rotted

Action: Replace all affected timber



6 - Low Risk (Finding 9)

Item: Activity Equipment - Multi Play (Junior) **Risk Level:** L - Low Risk
Manufacturer: Not Identified **Surface:** Wet Pour



Finding: There are weeds/vegetation growth between or around the edges of the surfacing **Action:** Remove weeds/vegetation growth



8 - Low Risk (Finding 10)

Item: Activity Equipment - Multi Play (Junior) **Risk Level:** L - Low Risk
Manufacturer: Not Identified **Surface:** Wet Pour



Finding: There is algae or moss growth on the surface resulting in slippery conditions **Action:** Clean and treat appropriately



6 - Low Risk (Finding 11)

Item: Activity Equipment - Multi Play (Junior) **Risk Level:** L - Low Risk
Manufacturer: Not Identified **Surface:** Wet Pour



Finding: The paintwork on this item has been damaged or worn exposing the metal underneath which is rusting

Action: Treat any rusting components and repaint



9 - Low Risk (Finding 12)

Item: Activity Equipment - Multi Play (Junior) **Risk Level:** L - Low Risk
Manufacturer: Not Identified **Surface:** Wet Pour



Finding: Parts of the steel on this item have corroded excessively and the metal has perforated in places
Action: Ensure all affected areas are treated and repaired



8 - Low Risk (Finding 13)

Item: Activity Equipment - Multi Play (Junior) **Risk Level:** L - Low Risk
Manufacturer: Not Identified **Surface:** Wet Pour



Finding: The unit is easily accessible and has an opening in the barrier to steep play elements in excess of 500mm
Action: Monitor use



8 - Low Risk (Finding 1)

Item: Ancillary Items - Bench
Manufacturer: Not Identified

Risk Level: L - Low Risk
Surface: Grass



Finding: The bench is damaged

Action: Repair or replace as required



8 - Low Risk (Finding 2)

Item: Ancillary Items - Bench
Manufacturer: Not Identified

Risk Level: L - Low Risk
Surface: Grass



Finding: The surface has eroded and the foundations are exposed

Action: Reinststate surrounding surfaces to cover the foundations



6 - Low Risk (Finding 3)

Item: Ancillary Items - Bench
Manufacturer: Not Identified

Risk Level: L - Low Risk
Surface: Grass



Finding: There is algae or moss on the surface of the equipment

Action: Clean and treat appropriately



2 - Very Low Risk (Finding 1)

Item: Ancillary Items - Shelter
Manufacturer: Monster Play Systems

Risk Level: V - Very Low Risk
Surface: Concrete



Finding: There is some graffiti present

Action: Remove the graffiti



6 - Low Risk (Finding 2)

Item: Ancillary Items - Shelter
Manufacturer: Monster Play Systems

Risk Level: L - Low Risk
Surface: Concrete



Finding: There is or are fixings missing on the item

Action: Replace all missing fixings



6 - Low Risk (Finding 3)

Item: Ancillary Items - Shelter
Manufacturer: Monster Play Systems

Risk Level: L - Low Risk
Surface: Concrete



Finding: There is/are bolt cap covers missing or damaged on the item

Action: Replace missing or damaged bolt cap covers



5 - Very Low Risk (Finding 1)

Item: Multi Use Games Area - Multi Use Games Area (MUGA)

Risk Level: V - Very Low Risk

Manufacturer: Not Identified

Surface: Bitmac



Finding: A clearly visible sign should be provided in a prominent position with the wording as detailed BS EN 15312- the equipment is not intended for children less than 3 years old- the warning Do not climb on the framework or nets- the warning Do not hang on the ring (if provided)- the warning Do not wear rings or other jewellery- name and telephone number of the administrator- number to call in case of accident

Action: Provide signage to BS EN 15312



8 - Low Risk (Finding 2)

Item: Multi Use Games Area - Multi Use Games Area (MUGA)

Risk Level: L - Low Risk

Manufacturer: Not Identified

Surface: Bitmac



Finding: There are trip hazards present at the gate entrance

Action: Reinstate surrounding surfaces to level to remove the trip points



6 - Low Risk (Finding 3)

Item: Multi Use Games Area - Multi Use Games Area (MUGA)

Risk Level: L - Low Risk

Manufacturer: Not Identified

Surface: Bitmac



Finding: There are weeds/vegetation growth between or around the edges of the surfacing

Action: Remove weeds/vegetation growth



5 - Very Low Risk (Finding 4)

Item: Multi Use Games Area - Multi Use Games Area (MUGA)

Risk Level: V - Very Low Risk

Manufacturer: Not Identified

Surface: Bitmac



Finding: There is/are finger entrapments in the panels and the item fails to meet the requirements of BS EN 15312 Clause 4.4.2.2 Entrapment of fingers

Action: Monitor use



8 - Low Risk (Finding 5)

Item: Multi Use Games Area - Multi Use Games Area (MUGA)

Risk Level: L - Low Risk

Manufacturer: Not Identified

Surface: Bitmac



Finding: There is algae or moss growth on the surface resulting in slippery conditions

Action: Clean and treat appropriately



6 - Low Risk (Finding 6)

Item: Multi Use Games Area - Multi Use Games Area (MUGA)

Risk Level: L - Low Risk

Manufacturer: Not Identified

Surface: Bitmac



Finding: There is some tree debris on the surfacing

Action: Remove and maintain



6 - Low Risk (Finding 7)

Item: Multi Use Games Area - Multi Use Games Area (MUGA)

Risk Level: L - Low Risk

Manufacturer: Not Identified

Surface: Bitmac



Finding: The tree canopy overhangs the equipment and is less than 2.0m away

Action: Lift tree canopy to ensure a minimum clearance of 2.0m from the equipment



8 - Low Risk (Finding 8)

Item: Multi Use Games Area - Multi Use Games Area (MUGA)

Risk Level: L - Low Risk

Manufacturer: Not Identified

Surface: Bitmac



Finding: There are a number of missing panels

Action: Replace



8 - Low Risk (Finding 1)

Item: Other - Cable Runway

Risk Level: L - Low Risk

Manufacturer: Playdale Playgrounds Ltd

Surface: Grass Matrix Tiles



Finding: The height of the seat is less than 400mm when partially loaded

Action: Ensure the seat is a minimum of 400mm above ground level when loaded with 130kg



0 - Risk Assessment not Undertaken (Finding 2)

Item: Other - Cable Runway
Manufacturer: Playdale Playgrounds Ltd
Risk Level: N - Risk Assessment not Undertaken
Surface: Grass Matrix Tiles



Finding: We recommend that the main cable is thoroughly inspected at least once every 2 years this; will involve either removing the cable or gaining access by ladders and/or steps to inspect for damage or internal rusting, this will help to ensure the continued safe use of the equipment

Action: Inspect cable every 24 months



2 - Very Low Risk (Finding 3)

Item: Other - Cable Runway
Manufacturer: Playdale Playgrounds Ltd
Risk Level: V - Very Low Risk
Surface: Grass Matrix Tiles



Finding: There is some graffiti present

Action: Remove the graffiti